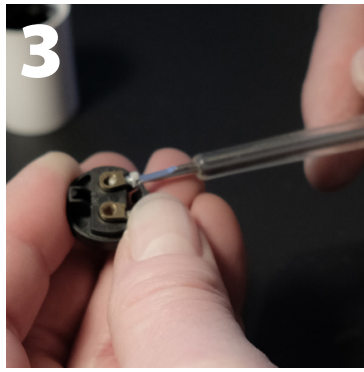


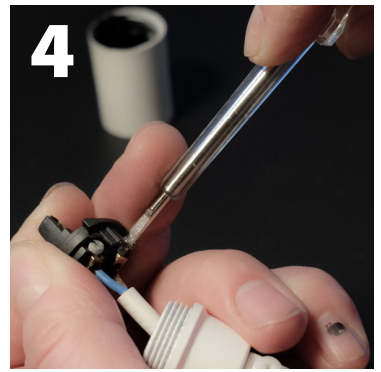
1  
in box



2  
disassemble socket and find a flat screwdriver



3  
loosen connector screws



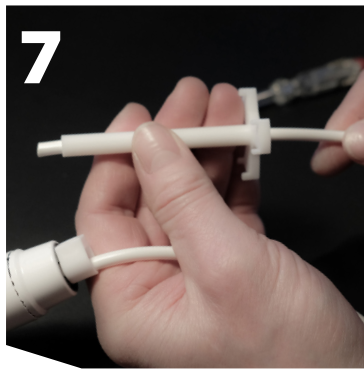
4  
connect cord



5  
check connection with a steady pull



6  
assemble socket and tighten cord grip screw



7  
put on bearing and the mount is ready!



8  
choose the **right** place for a pendant hook in the ceiling, hang the mount in the **right** height, cut the wire and connect it **properly** to electric outlet

- that was the easy part now the hard part:



9  
put on the **chosen** shade, screw in the **right** light bulb (in that order! - most bulbs will not let the shade pass)



remember: the hook can be moved, the height can be adjusted, and you can always try another shade or another light bulb

then - alas sit down, enjoy and contemplate

give it some tries and make just the right light for the place and time

E14 **LED** light bulbs: do **not** use incandescent or halogen. the shades ABS will soften at 115°C

i like LED bulbs with temperature 2700K for "hygge" and CRI > 90 for best colour rendering

2.2W is adequate in many situations; often a group of dim lightsources is preferable to a single bright one (yes: i am suggesting you should buy multiple pendants :-)